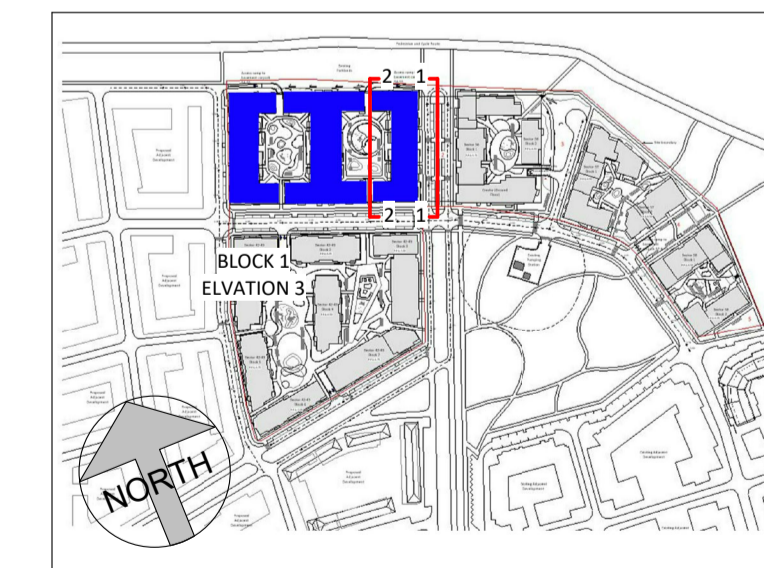


1 Sector 7 Block 3 East Elevation (1)
1 : 200



2 Sector 7 Block 3 West Elevation (2)
1 : 200



Material Notes	
Number	Note Text
1	Powder-coated aluminium doors and windows. Colour T.B.D.
2	Glazed railing to balcony
3	Medium-gray facing brick panels by techrete or similar
4	Green roof to flat roof where indicated
5	Selected zinc cladding
6	Metal panel to balcony bulkhead
7	Medium gray brick soldier course
8	Dark gray facing brick panels by Techrete or similar
9	Dark gray brick soldier course
10	Curtain wall glazing to winter gardens

Rev. No.	Date	By	Description
P01	17/12/2021		Issued for Planning
P03	11/03/2022		Issued for Planning

STATUS SUITABILITY CODES
S0 Work in progress
S1 Shared - for Co-ordination
S2 Shared - for Information
S3 Shared - for Review & Comment
S4 Shared - for Stage Approval
S6 Shared - for Project Information Model
S7 Shared - for Asset Information Model
D1 Suitable for Costing
D2 Suitable for Tender
D3 Suitable for Contractor Design
D4 Suitable for Procurement
An Published - Approved & Accepted Complete
Bn Published - Partially signed off with comments
CR Published - Construction Record

NOTES:

NOTE: All dimensions to be checked on site. Do not scale this drawing. Use figured dimensions only. To be read in conjunction with all other relevant project drawings and documents including from other consultants.

stage
PLANNING

status	revision no.
	P03
project ref.	20003

Date 17/12/21
 Drawn R RYAN
 Scale 1 : 200
 @ A1

CCH ARCHITECTS
 Architects • Interior Designers • Masterplanners

Lacken House, Dublin Road, Kilkenny R95 KF34
 Tel +353 (0)56 776 1591
 E-Mail: info@cch-architects.com

© Drawing copyright CCH Architects Ltd. Not to be copied, reproduced or distributed without prior consent of CCH Architects Ltd.

CLIENT	LISMORE HOMES LTD
PROJECT	GA2;RESIDENTIAL DEVELOPMENT BALDOYLE
DWG TITLE	ELEVATIONS AND SECTIONS SHEET 4
drawing no. BALN5 -CCH -00 -ZZ -DR -A -168	